

Veer Balak Smarak

Concept Presentation

The 2001 earthquake and destruction caused at Anjar



Rajeev the security guard who witnessed the incident.

He said, “ *the parade was just coming to an end. The band was playing national anthem and the earth started to shake. The houses on both sides of the streets just collapsed and crushed everyone. No one survived*”

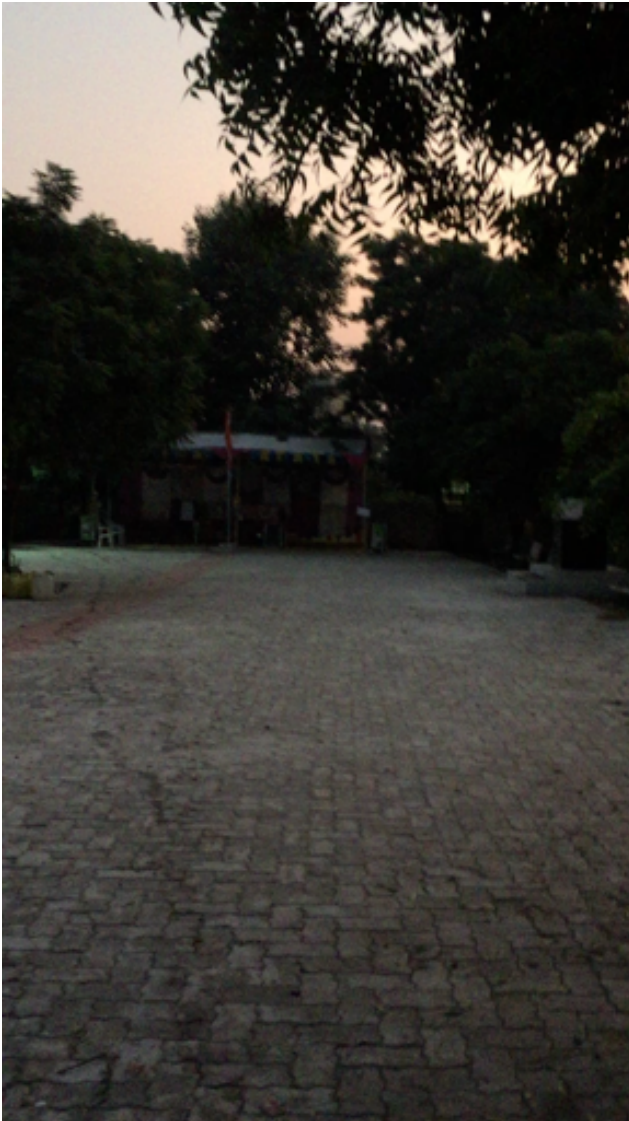


Bodies of school children being found from the rubble



SITE VISIT

Location where the incident took place



SITE VISIT

Entrance and cafe



Museum block



Auditorium block



Memorial



Museum block



SITE PLAN & ZONING

An experiential and
interactive space
dedicated to the innocent
souls who lost their life
children and for the
children

SITE PLAN & ZONING

Functions

1. Open landscape to learn about the incident that affected as many as 184 school going children's life
2. Museum to learn about the past and prepare for the future
3. Memorial to pay homage to the lost souls
4. Engaging community space for the local community and tourists

SITE PLAN & ZONING

4 ZONES



SITE PLAN & ZONING

Zone 2 : Museum

Zone 3 : Memorial

Zone 1: Outdoor Experience

Zone 4 : Community Space



Zone 1: Outdoor Experience

Zone 1: Outdoor Experience

Element 1: Gujarat Map

Element 2: Anjar Map

Element 3: Information panels

Element 4: Experiential pathway

Element 5: Silhouette installation

Element 5

Element 4

Element 3

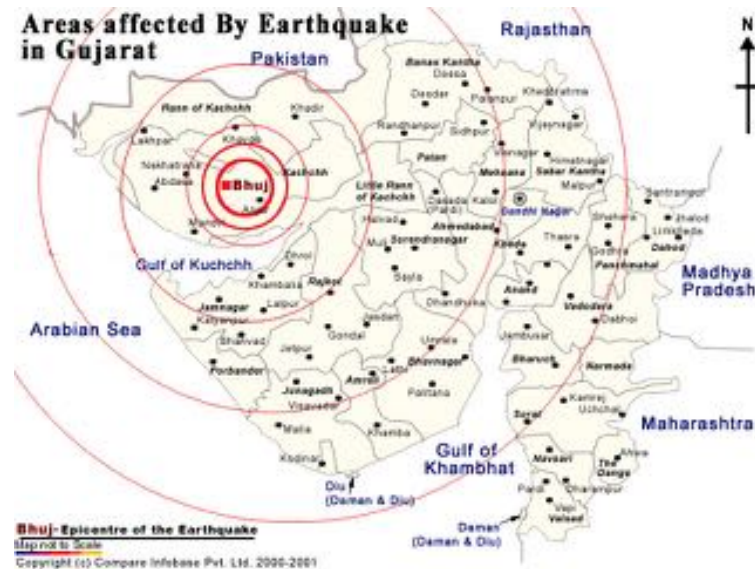
Element 2

Element 1



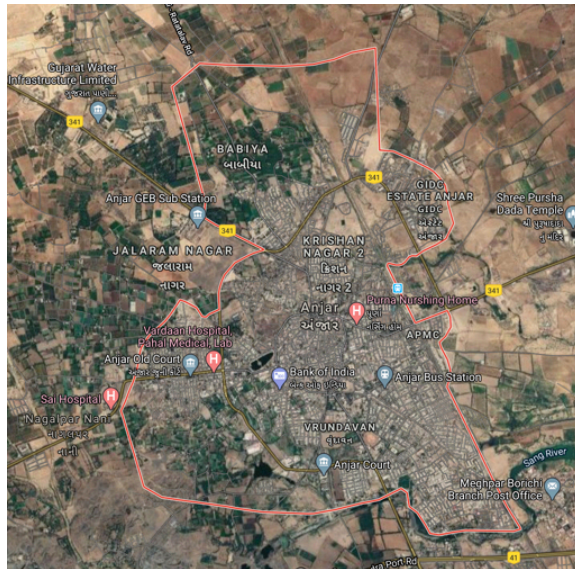
Element 1: Gujarat Map

2d map of Gujarat on floor with the various districts of Gujarat, highlighting the damage caused in these districts due to the 2001 earthquake



Element 2: Anjar Map

Outdoor 3d map of Anjar with marking of the path of the annual republic day rally and the location where the incident happened during the 2001 earthquake.



Element 3: Information panels

Freestanding information panels with text and illustrations about the information and stories related to the annual republic day parade done by school children and the stories related to 2001 earthquake



Nancy Takkar,
lone survivor in
Anjar middle
school no.2



Element 4: Experiential path

This landscaping element communicates about the chaotic atmosphere post the earthquake. The visitors walk through the path designed to resemble the cracks created in the earth after an earthquake.

