

Element 5: Silhouette installation

As the visitors exit the path they witness the negative silhouettes of the children who lost their lives to the earthquake and the emptiness that they left behind through a play of light and shadow



Zone 2: Museum Block

Zone 2: Museum Block

Gallery 1: Introductory Film

Gallery 2: The loss of Anjar and Gujarat

Gallery 3: Experience the earthquake

Gallery 4: The science of an Earthquake

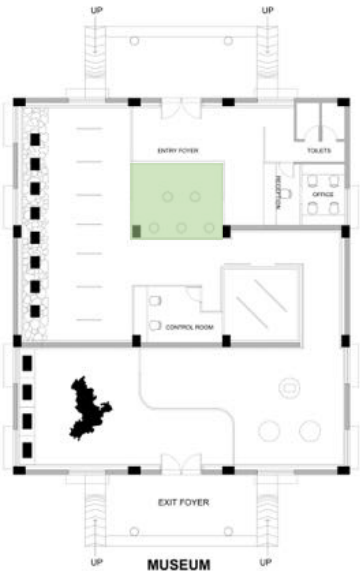
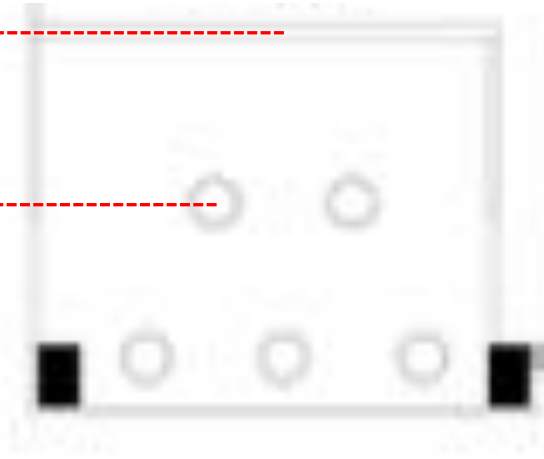


Gallery 1: Introductory Film

The film orients the visitor to the theme and story of the museum through a 3-4 minutes audio visual film being played on a TV screen

TV SCREEN

SITTING



Gallery 2: The loss of Anjar and Gujarat

Through static panels and objects, this gallery informs the visitors about the scale of the damage caused due to the 2001 earthquake in Gujarat, with focus on Anjar

Element 1: Inclined information panels

Element 2: Artifact display placed in debris

Element 3: Graphic panels



ELEMENT 1

ELEMENT 2

ELEMENT 3



Gallery 2 Element 1 | Inclined information panels

Inclined
information panels
with relevant
statistical data and
images related to
the damage
caused during the
earthquake



Gallery 2

Element 2 | Artifact display placed in debris

Object display integrated with debris to create an atmosphere of an earthquake struck zone. These objects will be original or replicas of objects related to the personal accounts of the people who suffered directly or indirectly due to the earthquake.



Gallery 3: Experience the earthquake

Facilitated with an earthquake simulator and integrated projections, this gallery will facilitate visitors to experience the earthquake through an artificially simulated environment with a mechanical system to shake the floor plate. The show will be 3-4 minutes in duration

Element 1: Simulated surface

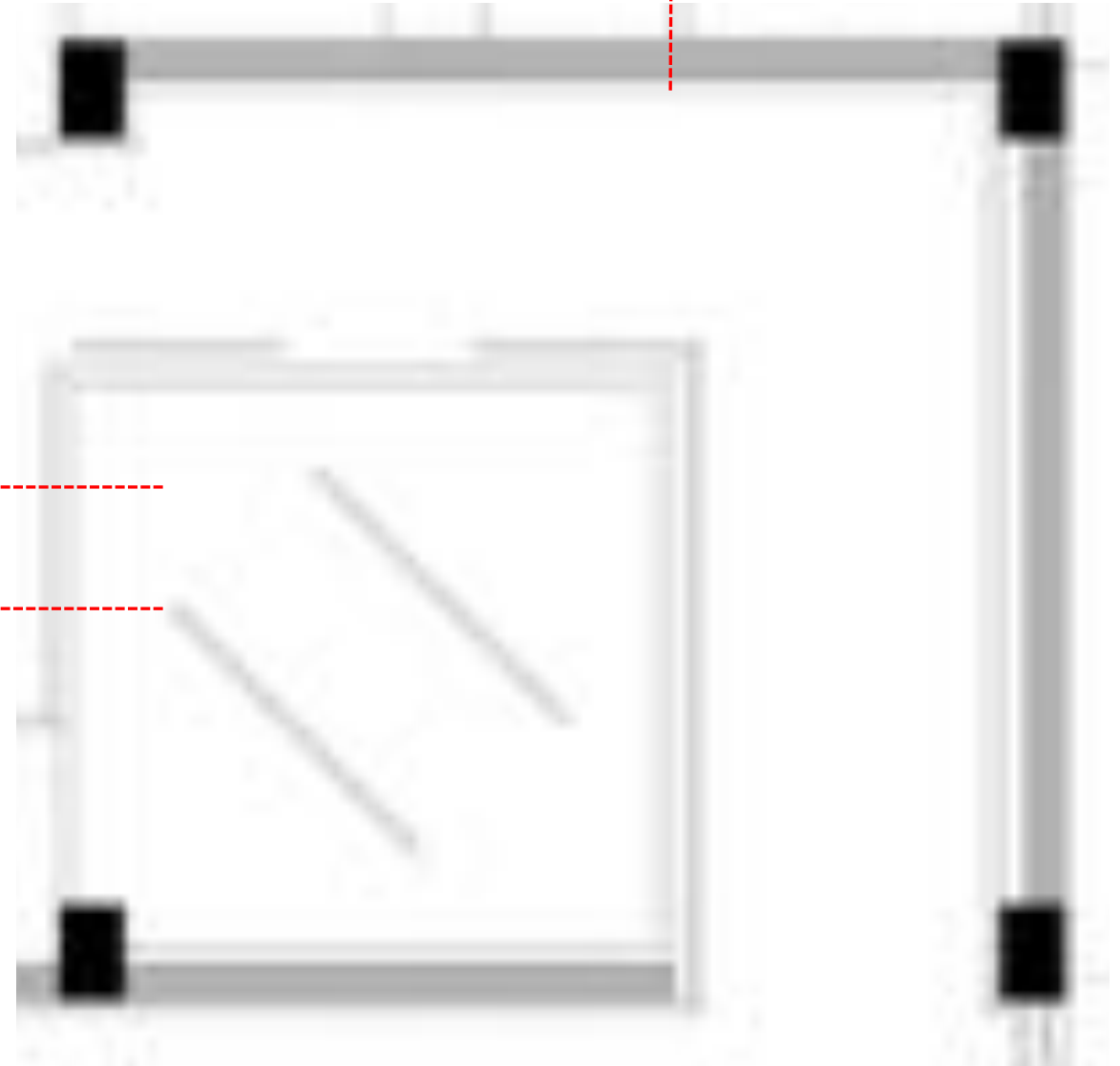
Element 2: Railings

Element 3: Projection screen

ELEMENT 1

ELEMENT 2

ELEMENT 3



Gallery 3: Experience the earthquake



Gallery 3: Experience the earthquake



Gallery 4: The science of an Earthquake

Element 1: model explaining the layers of earth

Element 2: model explaining plate tectonics

Element 3: audio visual on table

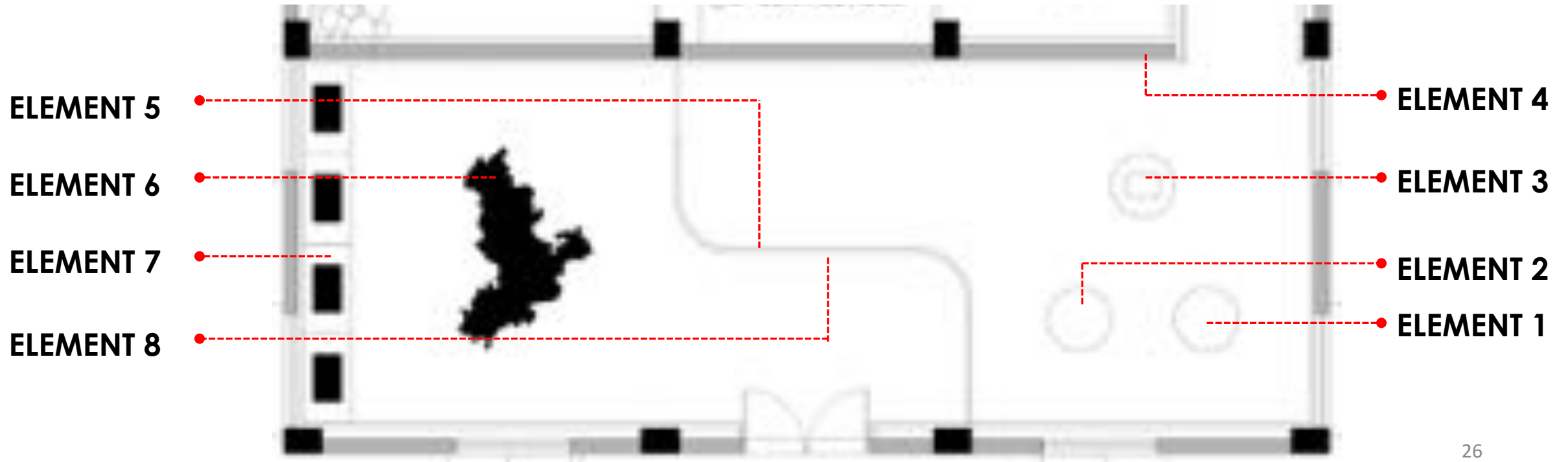
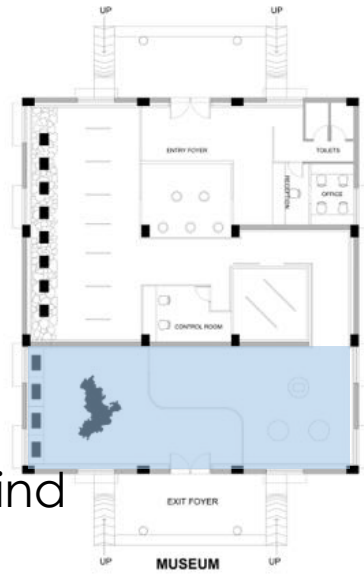
Element 4: Scenography panel

Element 5: Information Panels

Element 6: Floor printed map to show the fault lines on the Gujarat map

Element 7: Interactive models explaining the 4 types of earthquakes and the science behind

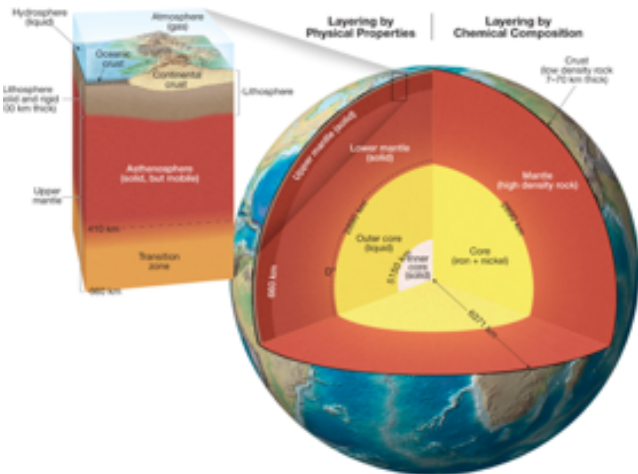
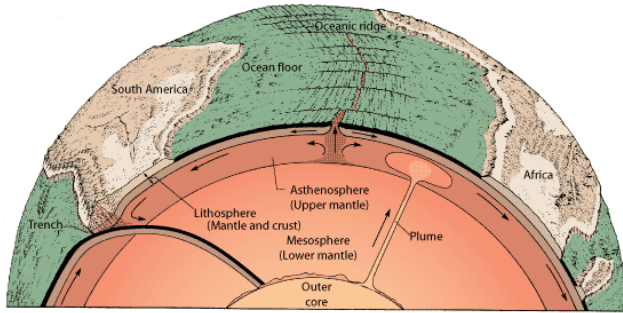
Element 8: Conclusive interaction wall



Gallery 4

Element 1: Model explaining the layers of earth

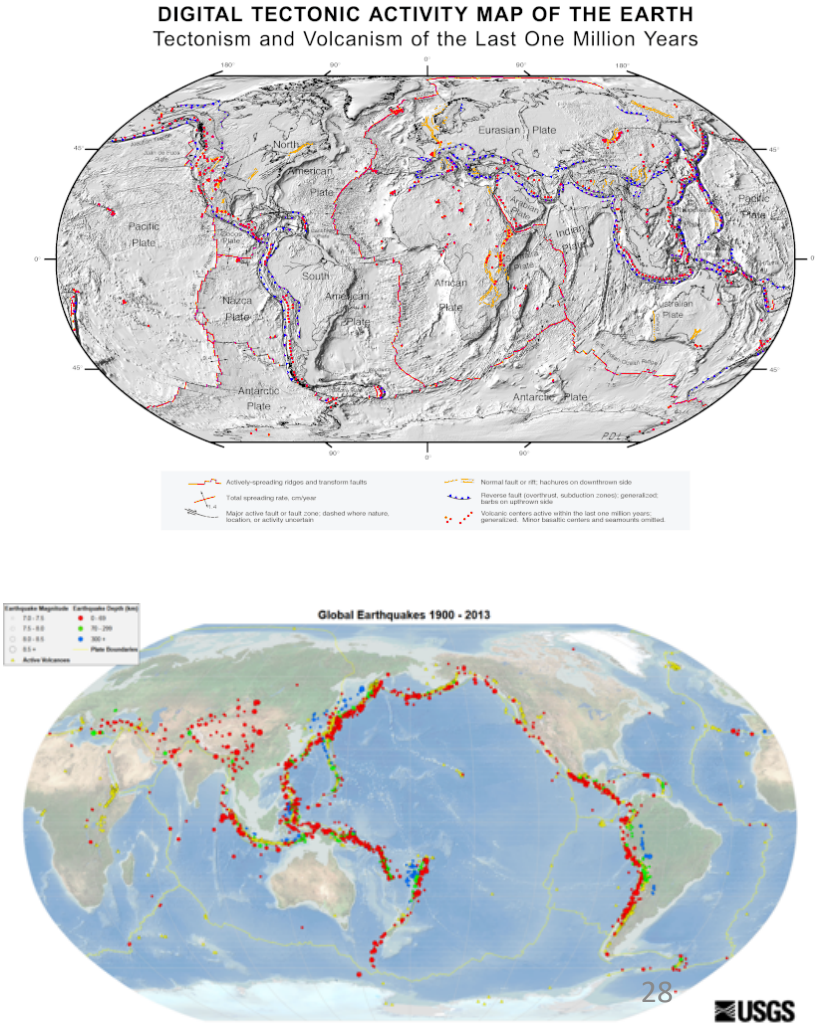
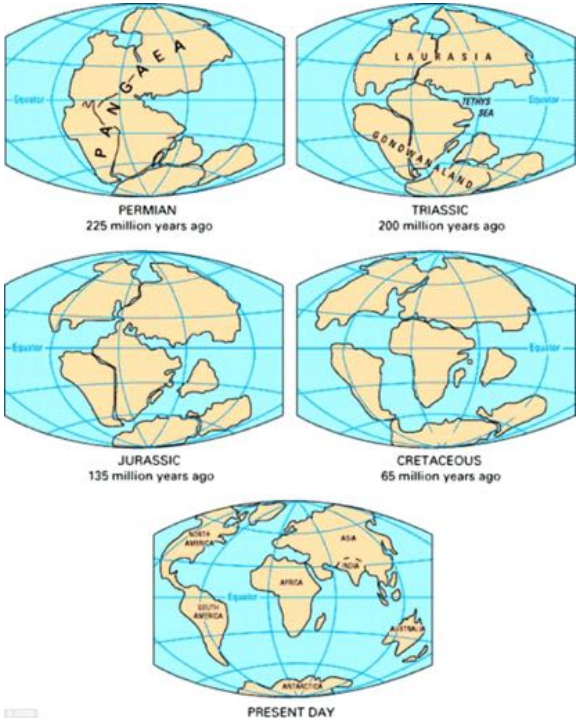
Element 2: Model explaining plate tectonics



Gallery 4

Element 3: Audio Visual on table

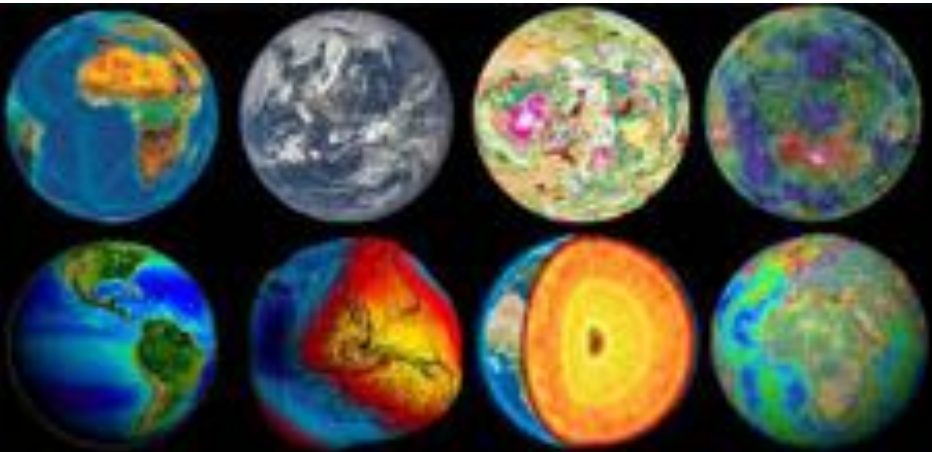
Audio-visual explaining continental drift and the 3 major seismic belts



Gallery 4

Element 4: Scenography panel

The panel with graphical illustration to bind the entire gallery together made in glass with backlit panels



Gallery 4

Element 5: Information panels with the details of the earth sciences and related information

